



Stadiums & Venues

Building icons and legacies for generations

Embrace
complexity

Value beyond
expectation

Local
legacies

Powerful
partnerships

People
& passion

With over a century of heritage in Australia, BESIX Watpac brings deep local knowledge, proven experience, and trusted industry relationships to every project. Originating in Queensland, we've earned our reputation as a respected builder across Australia and New Zealand through every project we undertake and the passionate people who build them.

We combine exceptional talent with leading digital technologies, in-house engineering, and the strength of global capability. Our diverse portfolio spans all sectors, with a focus on projects where we can create the greatest value.

Our ethos is 'building the best together', and collaboration is at the heart of everything we do. We work closely with our partners, local delivery teams, and communities to achieve the best outcomes — together.

Suncorp Stadium
Brisbane, Queensland

Building the best together

VALUE-DRIVEN, CERTAINTY ASSURED, LOCALLY FOCUSED



1,200+

number of projects
delivered since 1983



650+

passionate
employees



2,400+

strong subcontractor
network (since 2019)



160+

in-house engineering
experts globally



250+

awards won
since 2000



34

5+ Green Star
projects delivered

Bringing cultural icons to life

Enduring legacies delivered through unmatched expertise and deep local networks



110+

unique stadium and venue projects



60+

stadiums & venues delivered across Australia and New Zealand



250k

circa total seats



\$6B

circa total value of stadium and venue projects delivered

With a track record that includes delivering every major stadium in Queensland, backed by extensive experience, we understand what it takes to bring complex infrastructure to life.

BESIX Watpac delivers stadiums and venues with certainty – built to excel in operational efficiency, elevate user experience, and drive economic value.

Our deep expertise in the design and construction of complex, world-class stadiums and venues means we understand the unique challenges and opportunities these projects present.

With far-reaching experience in designing, building, and revitalising iconic sporting, cultural and entertainment infrastructure, BESIX Watpac has mastered the methodologies required for complex, high-performance facilities. From intricate facades and roof structures to unconventional forms, our specialist teams apply rigorous testing, modelling, and engineering to deliver tailored, technically optimised solutions—safely and efficiently.

With a strong focus on certainty of outcome, we align all stakeholders from the outset—ensuring delivery on time, on budget, and to the highest quality.

Unrivalled stadia expertise that drives results

From elite fields of play to seamless patron flow, our specialist stadiums and venues team brings deep technical knowledge, operational insight, and a collaborative mindset to deliver venues that exceed expectations.

Our team offers:

- ✔ A comprehensive understanding of client requirements and the critical elements of stadium delivery.
- ✔ A collaborative, transparent approach that de-risks projects and builds trust.
- ✔ Proven capability in managing complex programs and critical paths.
- ✔ Insight into operational efficiencies that support long-term venue performance.

Enhancing productivity through smarter building

Our approach to productivity is more than a process – it's a mindset. We focus on improving building efficiencies, digital construction, enhancing safety, and delivering maximum value for our customers, supply chain partners, and business.

By refining processes, embracing emerging technologies, optimising designs early in the project lifecycle and rethinking traditional approaches, we create smarter ways to build—driving tangible outcomes and lasting impact. Our strategy integrates multiple tools to ensure we deliver projects that are value-driven, adaptable, safe, and sustainable.

Through bold thinking, practical solutions and fostering a skilled and adaptable workforce, we strengthen supply chains, enhance collaboration, and contribute to a dynamic, resilient economy.

Queensland Country Bank Stadium, Townsville, Queensland

Stadiums & Venues Delivery

Our specialist approach to achieve low-risk program and cost certainty.



• Anna Meares Velodrome
Brisbane, QLD

Certainty from the start

Engaging BESIX Watpac early in the project lifecycle provides clients with a strategic advantage. Our approach fosters collaboration, improves design outcomes, and creates greater certainty around time, cost, and constructability. By integrating construction expertise from the outset, we help shape smarter, more efficient projects—before the first shovel hits the ground.

Through collaboration, we gain early visibility into cost and program, enabling smarter budget allocations and faster progress.

Key benefits include:

- Informed decision-making through real-time cost and program transparency.
- Greater certainty of delivery through early collaboration and shared project goals.
- Industry input from day one, ensuring constructability, resource availability, and sequencing are optimised.
- Faster mobilisation and alignment of all stakeholders, enabling a confident transition into main works.

Specialist expertise: unrivalled experience, integrated thinking, smarter delivery

With decades of experience delivering some of Australia's most complex stadiums and venues, we bring specialist insight from the outset. Our deep understanding of structural systems, venue functionality, and operational performance allows us to make more informed, efficient decisions from the earliest stages.

This knowledge is reinforced by our in-house Engineering Solutions Team, embedded within project teams to provide real-time input on design, constructability, and risk. Together, this integrated capability streamlines delivery, supports bold architectural ambitions, and ensures alignment with performance, budget, and stakeholder priorities.

- Early identification of proven structural approaches and potential challenges
- Smarter, faster decisions backed by real-world experience and engineering rigour
- Enhanced design outcomes that balance ambition with practical delivery

Local engagement

Our connection to local subcontractor markets is second to none. Through long-standing networks across our operational regions, we partner with trusted local subcontractors while also leveraging our broader national network to boost capability when required. This balanced, scalable approach enables us to meet workforce and delivery demands while maximising value for our clients and communities.

Alongside our communications team, our project teams work to build trust and manage public interest through meaningful engagement, sponsorships, and initiatives that contribute to positive social outcomes.

Sustainable approach

Smart solutions are essential to managing the resource demands of large-scale stadiums and venues. BESIX Watpac embeds environmental responsibility into every stage of design and construction, from sustainable material selection to energy-efficient systems and water harvesting initiatives.

Reliable commissioning and handover to ensure certainty of delivery

Our project planning and design process starts with your end goal. We consult widely with stakeholders and have commissioning specialists on board who undertake rigorous testing and commissioning, especially during a staged handover, to de-risk the final stages of the project and ensure certainty of delivery. Alongside our communications team, our project teams work to build trust and manage public interest through meaningful engagement, sponsorships, and initiatives that contribute to positive social outcomes.

Safety expertise

Our award-winning safety systems are tailored to the unique challenges of stadium construction and operation. We apply international best practices and advanced modelling to ensure safe environments for both workers and future patrons.

Future-proofed technology-enhanced fan experience

We integrate the full suite of digital infrastructure—from ticketing, IPTV, scoreboards, lighting, sound, and high-speed Wi-Fi—to create connected, intuitive fan experiences. With a deep understanding of stadium operations, we help ensure reliable, future-ready systems are seamlessly integrated that empower operational teams and exceed patron expectations.



Complex stadium design

CHRISTCHURCH, NEW ZEALAND



25,000

permanent seats



5,000

temporary seats



4

player change rooms

One New Zealand Stadium at Te Kaha

We are the lead contractor in the Kōtui consortium to deliver the people of Canterbury a world-class stadium. The consortium also includes architects Warren and Mahoney, global stadium design experts Populous and Mott MacDonald, and New Zealand local construction company Southbase.

The unrivalled stadium expertise through the Kotui team will be invaluable in delivering this complex multi-use arena. Collaboration with a local seismic engineering specialist will ensure the stadium is built to withstand Christchurch's seismic activity not only on completion, but also during construction.



CLIENT

Christchurch City Council



VALUE

\$683M



EXPERTISE

Design + Construct



TIMELINE

2021 – 2025



Te Kaha will be such an enabler for the future of our city and region. We are the sporting and events capital of New Zealand, and with this amazing new facility, we'll be able to showcase to the world the very best of what we can offer."

Lianne Dalziel
Christchurch Mayor



- ✓ Rectangular permanent stitched hybrid in-situ turf Field of Play and a fully covered roof including a clear span over the entire area of the Field of Play and Bowl
- ✓ One of only two stadiums in the world with a fully enclosed roof and natural grass playing field
- ✓ 30,000 seats (25,000 permanent and 5,000 temporary)
- ✓ A minimum of four player changerooms
- ✓ Food and beverage amenity for 25,000 patrons

Delivering a North Queensland icon

TOWNSVILLE, QUEENSLAND



11.9%

Indigenous participation



2,000+

local jobs



85%+

local subcontractors



\$163M+

injected into the economy through local business

Queensland Country Bank Stadium

Delivered on time and within budget, the Queensland Country Bank Stadium project provided a substantial boost to the North Queensland economy. By breaking up larger trade packages into smaller contracts, we created significantly more opportunities for local businesses to be part of this iconic community development.

The project also created employment pathways for local workers and apprentices, along with supporting jobs for more than 135 Aboriginal and Torres Strait Islander people. Through our Indigenous Participation Strategy, we effectively doubled our original target of 6.6 per cent – achieving an impressive 11.9 per cent participation.



CLIENT

Queensland Government



VALUE

\$318M



EXPERTISE

Managing Contractor



TIMELINE

2017 – 2020



This is a magnificent contribution to the skyline of the city of Townsville, the likes of which we will probably not witness again for generations.”

Master Builders Awards
Judges' comments



Award Winner

- 2020 Project of the Year
Master Builders (North Queensland)
- 2020 Excellence in Workplace Health & Safety
Master Builders (North Queensland)
- 2020 Construction Awards Sporting Facilities
Master Builders (North Queensland)

- ✓ Horseshoe shaped roof inspired by the pandanus plant – one of the most geometrically complex in Australia
- ✓ Extensive testing, modelling and engineering to ensure the roof can withstand cyclonic winds
- ✓ Each of the 36 roof trusses is geometrically unique and required a 14-day joint-effort between our team and subcontractors to assemble, before being installed using a rare 400-tonne crane
- ✓ 25,000 seats
- ✓ Home to the high-profile North Queensland Cowboys rugby league team

Decades-long partnership

BRISBANE, QUEENSLAND



27y

successful client relationship



11,000m²

of glass



500k

concrete blocks

Suncorp Stadium

Our enduring partnership with Suncorp Stadium is testament to our skill and expertise in delivering world-class sporting venues. Originally contracted to deliver the new western grandstand in 1993, this was followed by a full \$280 million redevelopment ten years later.

This major redevelopment posed significant challenges including a tight and inflexible deadline to be ready ahead of the 2003 Rugby World Cup. The difficult site, in close proximity to homes, businesses and transport networks required careful planning, expertise and significant stakeholder engagement to deliver this full turnkey stadium on time and within budget. We have delivered multiple subsequent works, meticulously planning our program around active concert and sporting schedules.



CLIENT

Queensland Government



VALUE

\$300M



EXPERTISE

Managing Contractor



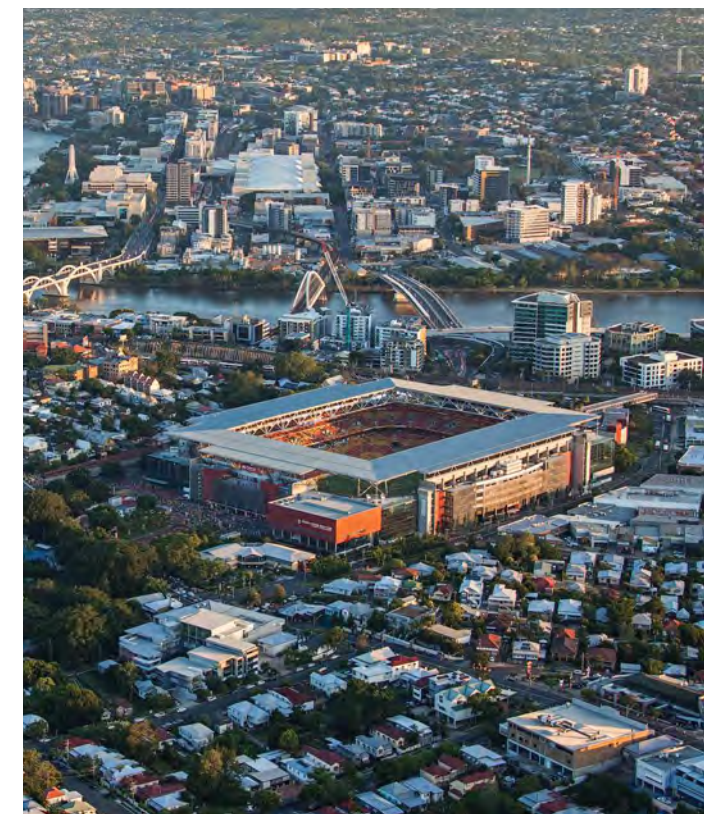
TIMELINE

1993 – 2017



There's no doubt that this is the best rugby league or rugby union field in the world – it is just fabulous.

Terry Mackenroth
Former QLD Treasurer



TIMELINE	PROJECT	VALUE
1993–1994	Lang Park Western (Frank Burke) Stand	\$27M
2001–2003	Suncorp Stadium Redevelopment	\$280M
2008–2009	QRL Headquarters Fitout	\$3M
2011	Flood Rectification and Remedial Works	\$9M
2011–2012	Player Facilities	\$9M
2015–2016	Western Grandstand L5 Upgrade – Stage 1	\$3M
2016–2017	Western Grandstand L5 Upgrade – Stage 2	\$5M
2016–2017	Stadiums Queensland Workplace	\$1M
2017	Videoboard Replacement	\$3M

- ✓ Over seventeen million patrons since the completion of the major upgrade
- ✓ Over the course of our involvement the venue's capacity has increased from 14,000 to 52,500 seats, with 70 per cent undercover
- ✓ 258 car parking spaces
- ✓ 105 weeks of construction

Transforming an iconic venue

SYDNEY, NSW

Moore Park Precinct Village

Sydney’s iconic sports and entertainment precinct will be transformed through a partnership between BESIX Watpac and Venues NSW. The Moore Park Precinct Village project, next to the Sydney Cricket Ground and Allianz Stadium, will feature new community and recreational facilities, public open spaces, food and beverage offerings, a children’s play area, and a car park for up to 1500 vehicles.

BESIX Watpac was chosen for its unparalleled expertise in complex stadia projects and track record for successful client collaboration. The team will work closely with Venues NSW to minimise impact on stakeholders and the local community.

- ✓ BESIX Watpac’s value engineering proposed a redesign of the West basement car park to avoid risks like the Sydney Dyke, groundwater, heritage items, and construction access issues
- ✓ The value engineering solution has optimised the car park layout and reduced the East basement footprint
- ✓ Increased public space will be created to provide a more inviting environment for visitors



CLIENT
Venues NSW



VALUE
\$171M



EXPERTISE
Design + Construct



TIMELINE
2024 – 2026

Geotechnical specialist

GOLD COAST, QUEENSLAND

Cbus Super Stadium

This highly prized and geotechnically complex project required extensive collaboration between our team and the Gold Coast City Council to develop a successful remediation strategy to address highly contaminated soil. The site was preloaded with clean soil and wick drains were installed to drain acid sulphate sub-soil from the landfill.

- ✓ Received 13 awards including the Australian Institute of Building’s Professional Excellence Award (Technology and Innovation) and a High Commendation from Safe Work Australia
- ✓ Collaboration with Workplace Health and Safety to develop an award-winning approach to address the challenge of installing the innovative and large-scale membrane-vaulted roof
- ✓ Time and cost benefits created for our client through the use of prefabricated elements
- ✓ Delivered defect free and with no compliance issues
- ✓ 1 million litre rain and recycled water tank on site



Multi-award Winner

- 2008 Professional Excellence (Technology and Innovation)
Australian Institute of Building (National)
- 2008 Highly Commended
Federal Government Safe Work Australia



CLIENT
Queensland Government



VALUE
\$152M



EXPERTISE
Managing Contractor



TIMELINE
2006 – 2007





GEELONG, VICTORIA



91%

local content target



50%

subcontractors from Geelong region



6%

aspirational Indigenous participation target



40,000

seating capacity

GMHBA stadium at Kardinia Park Stage 5 Redevelopment

A new northern stand will be delivered as part of the upgrade at GMHBA stadium, increasing the seating capacity by 14,000 to 40,000, and position the sports arena as the largest stadium in regional Australia.

Social procurement is at the project's heart. Our 'spend local' and 'spend social' economic initiatives are being implemented to create opportunities for local, Indigenous and disadvantaged groups as well as boost the local economy through local content.



CLIENT
Kardinia Park Stadium Trust



VALUE
\$121M



EXPERTISE
Design + Construct

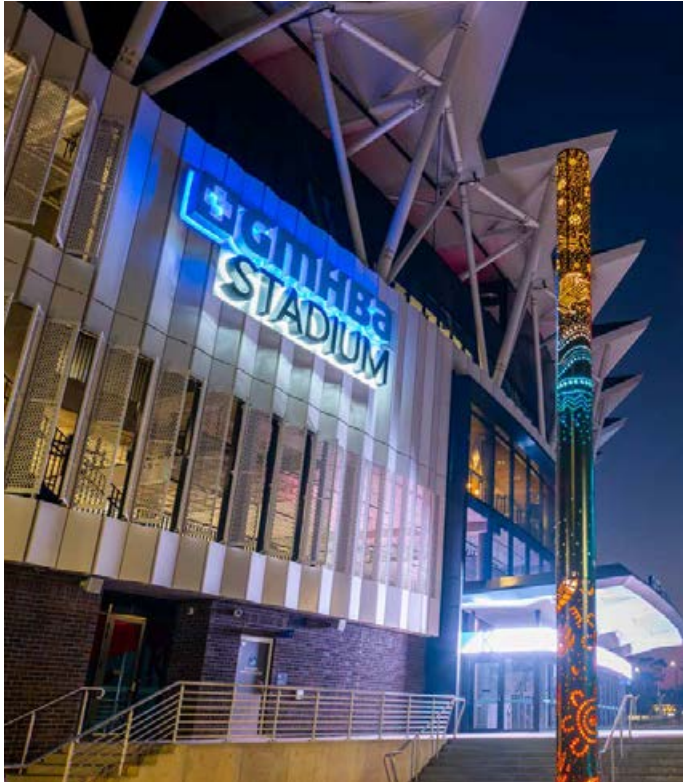


TIMELINE
2021 – 2023



We are delighted to be extending the same 'spend local' and 'spend social' initiatives that we have on the nearby Civic Accommodation Building. We are extremely proud of the contribution we are making to the Geelong community and the local economy."

Simon Ballard
General Manager Victoria and South Australia,
BESIX Watpac



- ✓ Works include several major improvements including a new northern entry plaza, change rooms, and new media facilities
- ✓ The upgrade will deliver a regional cricket hub and replacement facilities for the Geelong Cricket Club
- ✓ The upgrade will position GMHBA Stadium as the largest regional stadium in Australia
- ✓ A local content target of 91% has been set for the project under the State Government's Local Jobs First policy
- ✓ BESIX Watpac is aiming to have more than 50% of subcontractors engaged from Geelong
- ✓ Targeting minimum 3% Indigenous employment with an aspirational goal of 6%
- ✓ \$1.2 million allocated to purchasing goods and services from social enterprises



BRISBANE, QUEENSLAND

The Gabba Brisbane Cricket Ground

Our experience at ‘The Gabba’ spans several decades with each stage delivered on time and within budget. No construction activity on site has interfered with the staged events, including football, cricket matches and the 2000 Olympic Games.



CLIENT
Queensland Government



VALUE
\$167M



EXPERTISE
Design + Construct



TIMELINE
**1994 – 2005; 2007 – 2009
(Sundry works); 2020**



The completed facilities are a credit to the workmanship of BESIX Watpac and the subcontractors it engaged. They have already attracted very favourable comments from those who have used them.”

Wayne Myers, Chairman
Major Sports Facilities Authority
(now Stadiums Queensland)

- ✓ Staged handovers ensured the maximum number of seats remained available during construction
- ✓ Works were carried out over, around and below an adjacent school and through our collaborative approach, the school remained fully operational throughout construction
- ✓ Seven separate stages over 26 years with the latest upgrade modernising the ground and enhancing public areas, signage, media areas and corporate spaces
- ✓ 42,000 seats

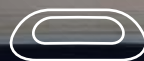
Engineering excellence

BRISBANE, QUEENSLAND



1,500

seating capacity



250m

timber track



69km

of surface timber
for the track



1,600m²

of durable, fire resistant PTFE
fabric in roof and façade

Anna Meares Velodrome

Our team expertly handled multiple challenges when delivering Queensland's first indoor velodrome. The combination of the hyperbolic paraboloid roof and the tessellated wall design created several design detailing issues. We overcame these through our considerable experience in delivering international standard sporting venues, extensive prototype modelling and collaboration with key design consultants.

We also conducted extensive risk management and value engineering workshops to ensure budget was met without compromising the design intent and functionality, which improved safety while delivering cost benefits.



CLIENT

Queensland Government



VALUE

\$55M



EXPERTISE

Managing Contractor



TIMELINE

2014 – 2016



I must say the Velodrome looks absolutely brilliant and will no doubt be one of the Gold Coast 2018 Commonwealth Games' highest profile, most photographed venues... world class."

George Farrington,
Manager Infrastructure and Overlay
Gold Coast 2018 Commonwealth
Games Corporation



Multi-award Winner

- 2017 National President's Award
Master Builders (National)
- 2017 Sporting Facilities Award
Master Builders (Queensland)
- 2016 Engineering Project Steel Design
Australian Steel Institute (ASI) Steel
Design Awards (Queensland)
- 2016 Steel Excellence Award in
Engineering Projects
Australian Steel Institute (ASI)
(Queensland & Northern Territory)



A climatic challenge was overcome by implementing a water misting system to produce an artificial climate, maintaining 70 per cent humidity, while the timber lathes were laid – this prevented the timber from buckling



Building a concrete shell to precisely match timber dimensions while the track was prefabricated in Germany ensured installation was seamless and efficient



1,500 seats



Hosted the cycling events at the Gold Coast 2018 Commonwealth Games

First Commonwealth Games venue

GOLD COAST, QUEENSLAND

Gold Coast Aquatic Centre

This exceptional aquatic facility was the first competition venue to be completed for the Gold Coast 2018 Commonwealth Games and has positioned the city as a prime location for local, national and international events.

- ✓ Collaboration with the Gold Coast City Council and Queensland Government ensured minimal impact on local businesses, residents and major events such as the Gold Coast Marathon throughout construction
- ✓ 64 per cent of subcontractors were from the Gold Coast
- ✓ 90 per cent of subcontractors from South East Queensland
- ✓ 1,000 permanent seats with flexibility built into the design to accommodate an extra 9,000 temporary seats



CLIENT
Queensland Government



VALUE
\$40M



EXPERTISE
Managing Contractor



TIMELINE
2012 – 2014



Delivered
3 months early

MELBOURNE, VICTORIA



Melbourne Park Redevelopment Eastern Plaza

Home to the Australian Open, Melbourne Park is one of Australia's most recognisable sporting venues. We delivered the Eastern Plaza and Australia's National Tennis Centre amid a busy event schedule.

- ✓ First Australian stadium to achieve LEED Gold Rating
- ✓ Three months early delivery made possible through our smart approach to program management
- ✓ Designed to meet strict dimensional tolerance and vibration criteria to ensure compliance with international standards
- ✓ Solution for disposing 18,000 cubic metres of highly contaminated soil identified during early works using a burrow pit and applying a capping layer met EPA guidelines
- ✓ 560,000+ construction hours worked



Multi-award Winner

- Excellence in Commercial Buildings over \$80 million
Master Builders Association
Victoria Awards



CLIENT
Victorian Government



VALUE
\$115M



EXPERTISE
Design + Construct



TIMELINE
2011 – 2012

Australia's first solar stadium

GOLD COAST, QUEENSLAND



275KkW

solar panel system



20%

of energy needs produced through solar



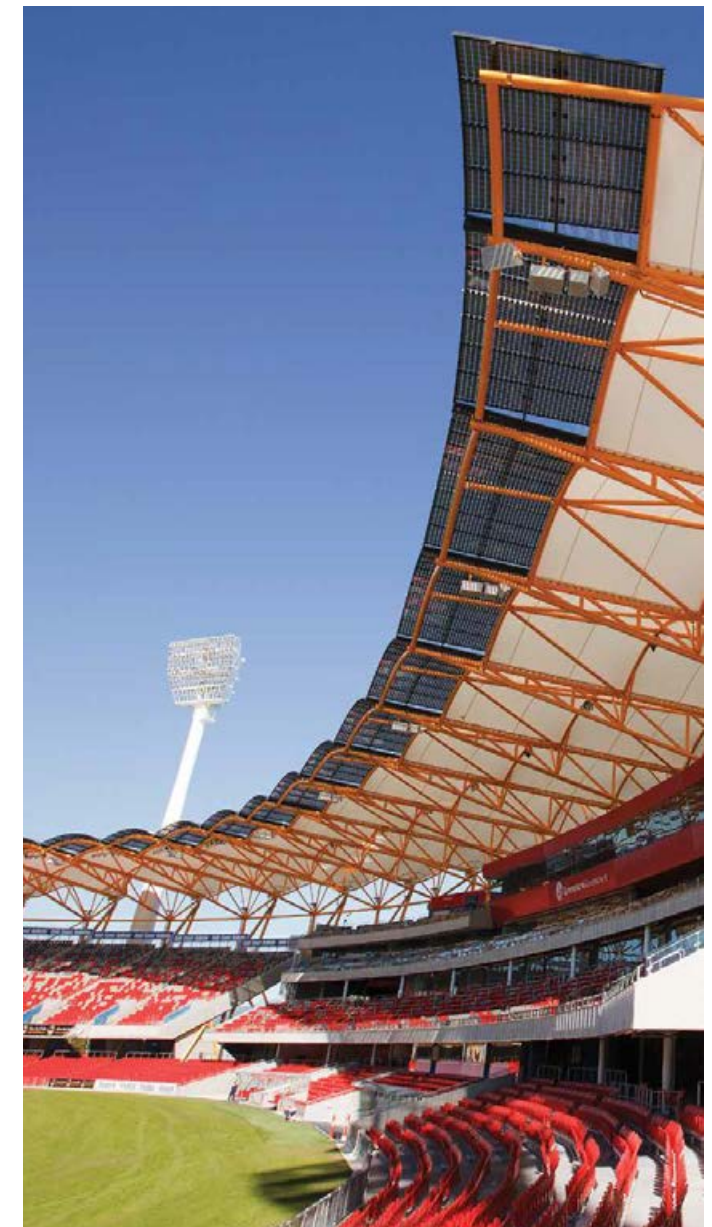
\$600K

cost saving through water cistern system



\$1M

cost saving through substation system



People First Stadium

Host of the opening and closing ceremonies of the Gold Coast 2018 Commonwealth Games, Metricon Stadium was built to meet the international standards of six sporting codes. It is also Australia's first 'solar stadium' with 600 custommade solar panels with the ability to generate 20 per cent of its energy requirements.

Our project team's flexible and adaptable approach to the redevelopment of the existing stadium ensured issues were addressed early and efficiently to keep the project on schedule. We effectively accommodated a major change in scope, and safely handled asbestos and soil contamination.



CLIENT

Queensland Government, AFL and Gold Coast City Council



VALUE

\$139M



EXPERTISE

Managing Contractor



TIMELINE

2009 – 2011



The outcomes achieved at Metricon [People First] Stadium have exceeded client expectations with this stadium receiving very positive feedback from all visitors to date – a tribute to BESIX Watpac's management role.

Don Hewitt,
Principal Project Manager Project Services –
Department of Public Works

- ✓ Saved our client millions of dollars through various innovations including using temporary bracing to support the roof during construction, installing substations to minimise the need for large cable systems, and a water-efficient cistern system
- ✓ Multiple award-winning including the Australian Institute of Building's Professional Excellence Award (Commercial Construction \$100 million plus) and Master Builders Queensland Award for Sporting & Community Services Facilities over \$20 million
- ✓ 25,000 seats



International-standard sports facilities

MELBOURNE, VICTORIA

Enhancing communities

WERRIBEE, VICTORIA

Werribee Sports and Fitness Centre

A major expansion and refurbishment of the Werribee Sports and Fitness Centre delivered an integrated, first-class sporting facility for the region with improved capacity to host major community sporting competitions.

- ✓ Fully equipped gym including a boxing studio
- ✓ Six multi-purpose indoor courts
- ✓ Two outdoor netball courts
- ✓ 1,500-seat show court



CLIENT

Wyndham City Council



VALUE

\$43M



EXPERTISE

Design + Construct



TIMELINE

2014 – 2016

State Sports Facilities Project

This project involved the redevelopment of Lakeside Oval and Albert Park, providing a variety of facilities to be enjoyed by sporting clubs and the wider community

- ✓ Lakeside Oval transformed into the State Athletics Centre which features an International IAAF Class 1-approved synthetic eight lane running track
- ✓ Refurbishment of former South Melbourne Football grandstand and converting it into the home of the Victorian Institute of Sport
- ✓ Two new synthetic and two new grass playing fields
- ✓ 7,400-seat northern grandstand



CLIENT

Victorian Government



VALUE

\$50M



EXPERTISE

Construct Only



TIMELINE

2010 – 2012





Historic aviation showcase

ADELAIDE, SOUTH AUSTRALIA

Adelaide Airport, Vickers Vimy Exhibition Space

BESIX Watpac successfully delivered the Vickers Vimy Exhibition at Adelaide Airport, relocating and preserving the historic 100-year-old Vickers Vimy aircraft. This project highlighted our deep understanding of client requirements and critical delivery paths. Through a collaborative approach, we ensured operational efficiencies as well as mitigated risks, allowing Adelaide Airport to remain fully operational.

- ✓ 100-year-old aircraft relocation
- ✓ 30 local trades engaged for project
- ✓ Installation of a 2.4-metre-high glass balustrade separating the historic Vickers Vimy from visitors.
- ✓ The aircraft showcase features interactive displays, special lighting, museum-grade cabinets, and an integrated audio-visual system.
- ✓ Architectural elements like Rimex Ceiling Discs and non-reflective glass balustrades enhance the visitor experience. The preservation of the Vickers Vimy aircraft is ensured through light, temperature, and humidity control.
- ✓ The building harmonises with Adelaide Airport's standards, featuring a blast-resistant façade. It includes the relocation of bronze plaques and the John Dowie statue to landscaped areas, with signage installed on charcoal-washed precast panels.



CLIENT
Adelaide Airport Limited



VALUE
\$5M



EXPERTISE
Exhibition space construction, heritage preservation



TIMELINE
Jan 2010 – Dec 2012

BOONDALL, QUEENSLAND

Brisbane Entertainment Centre

Diverse cultural experiences

CLIENT **Brisbane City Council**
EXPERTISE **Construct Only**

- ✓ 60,000 square metre multi-purpose venue providing four main auditoriums that cater to all types of entertainment from rock concerts and international sporting events to high school eisteddfods
- ✓ Designed and built to international standards for multiple sports as well as entertainment and convention needs
- ✓ Complex planning was required to accommodate the wide variety of needs for the diverse mix of end users
- ✓ Hosted some of the world's most recognised entertainers



LONGREACH, QUEENSLAND

Qantas Founders Museum (QFM) and Airpark Roof Stage 1

Celebrating Australia's heritage

CLIENT **Qantas Foundation Memorial Trust**
EXPERTISE **Construct Only**

- ✓ Two projects celebrating Qantas airline's outback heritage including the delivery of the 3,150-square-metre museum in 2001 as well as the Airpark Roof project in 2020
- ✓ The 8,000 square metre roof covers a collection of legendary Qantas aircraft, including the mighty Boeing 747, which were unable to be moved during construction
- ✓ The aircraft provide the backdrop for a light and sound exhibition
- ✓ Rapid seven month construction schedule undertaken in the hottest months of the year



Multi-award Winner

- 2021 **Tourism and Leisure Facilities over \$10M** Master Builders Queensland Award (CQ)
- 2021 **Central Queensland Project of the Year** Master Builders Queensland Award (CQ)

First chapter for new airport

WESTERN SYDNEY, NEW SOUTH WALES

Western Sydney Airport Experience Centre

The first design and construct package for the new Western Sydney Airport involved the delivery of a new visitor centre to showcase the proposed airport to a variety of stakeholders including the local community and international business.

- ✓ Works also included construction of site accommodation to be used as the project management office for the duration of the new airport's build
- ✓ Completing design from 70 per cent to 100 per cent
- ✓ Coordinating the design, manufacture, supply and installation of the mass timber structure
- ✓ Design and fit-out of the interactive display
- ✓ Excavation, civil and site works



CLIENT
Western Sydney Airport



VALUE
\$21M



EXPERTISE
Design + Construct



TIMELINE
2018 - 2019



CBD expertise

SYDNEY, NEW SOUTH WALES

Museum of Contemporary Art Redevelopment

Located in one of Australia's busiest tourist locales, the refurbishment and extension of the Museum of Contemporary Art at The Rocks in Sydney was complex and challenging requiring close collaboration with stakeholders.

- ✓ Staged construction methodology enabled the maximum number of facilities to remain open throughout works
- ✓ Stringent noise and vibration mitigation strategies protected the museum's collection from damage
- ✓ Extensive engagement with local businesses and authorities to reduce impacts on this busy commercial, tourist and retail precinct



CLIENT
Museum of Contemporary Art



VALUE
\$47M



EXPERTISE
Construct Only



TIMELINE
2010 - 2012

BESIX Group



\$14.6B

work in hand



10,000+

employees



26+

countries



5

continents

BESIX Group, an award-winning international contractor, has been delivering some of the world's most iconic structures across five continents throughout their 110+ years of operation, ranging from the world's tallest building to the most complex infrastructure. Through BESIX Watpac, Australia and New Zealand proudly serve as one of the Group's three home markets.

This connection gives BESIX Watpac access to leading global knowledge that complements our deep local delivery expertise. We have a fully integrated local in-house Engineering Solutions team who is part of the BESIX Engineering Department – this means we can bring the most advanced technical engineering, constructability,

and methodology insights to each project. Our partners can be confident that by engaging BESIX Watpac, their projects will be in the best hands, benefitting from our accelerated ability to delivery any project, especially where complexity is involved.



↳ Burj Khalifa
Dubai, UAE



↳ Saint-Denis Pleyel Station
Paris, France



↳ Grand Egyptian Museum
Giza, Egypt



↳ Dubai Water Canal Bridges
Dubai, UAE

Superior spectator and player outcome

DOHA, QATAR

Khalifa Stadium Redevelopment

Redeveloping an iconic stadium requires maintaining respect for the original design while integrating the latest state-of-the-art features. BESIX has delivered two major upgrades at Khalifa Stadium, the latest aligning it to strict FIFA standards.

- ✓ Second renovation included increasing the seating capacity to 40,000 in preparation for the 2022 FIFA World Cup
- ✓ Features an innovative cooling technology that maintains an optimal playing temperature of 26 degrees Celsius
- ✓ A sweeping canopy that covers all seated areas enhances the spectator experience
- ✓ Achieved GSAS 4 Star sustainability certification



CLIENT

**Government of
State of Qatar**



VALUE

\$500M



EXPERTISE

Design + Construct



TIMELINE

2003 – 2005 & 2014 – 2017





Al Janoub Stadium

One of eight stadiums to host the 2022 FIFA World Cup in Qatar, Al Janoub is an ultra-modern masterpiece with its architecture echoing the hull of the culturally significant dhow, a local pearl fishing boat.

Working within the client's budget, BESIX's in-house engineering team thoroughly interrogated the design and identified opportunities to reduce costs by compressing the stadium's overall footprint while remaining compliant with strict FIFA criteria. Reducing the weight and radius of the steel structure, faster installation methods, and overall waste reduction resulted in a 30 per cent cost saving to the client.



CLIENT
The Qatar 2022 Supreme Committee for Delivery and Legacy



VALUE
\$950M



EXPERTISE
Design & Construct



TIMELINE
2016 – 2019



The design expresses its context, establishing a relationship with the city and its surrounding landscape.

Zaha Hadid,
Architect – Zaha Hadid Architects

- ✓ Awarded a Class A rating from the Global Sustainability Assessment System (GSAS)
- ✓ Sustainability features include an innovative HVAC system, efficient district cooling plant, highly insulated walls and energy efficient lighting
- ✓ 100 per cent condensate water recovered and used for landscaping
- ✓ 71 per cent of materials responsibly sourced
- ✓ 20 per cent of permanent materials made from recycled content
- ✓ 92 metre fully retractable roof crucial for temperature control

Rapid construction program

JEDDAH, KINGDOM OF SAUDI ARABIA

King Abdullah Sports City

A spectacular multi-purpose venue including a 60,000 seat world-class stadium, the project was completed in a record 22 months by implementing smart methodologies throughout design and construction while achieving the highest standard in quality, safety and comfort for the spectators.

- ✓ A full turnkey project including an international standard stadium, a 2,000 seat multi-purpose indoor stadium, external football pitches, tennis courts and an athletics track
- ✓ Associated infrastructure included 45,000 car parks, eight kilometres of roads, two kilometres of walkways as well as power, water and sewerage facilities
- ✓ Features a cutting-edge external design that promotes energy efficiency and natural cooling
- ✓ The precinct includes a 500 person mosque



CLIENT

Saudi Aramco



VALUE

\$300M



EXPERTISE

Design + Construct



TIMELINE

2011 – 2014



World's largest Guggenheim Museum

ABU DHABI, UAE

Guggenheim Abu Dhabi

The largest of the four global Guggenheim museums, this spectacular building will comprise steel, concrete, wood and aluminium. Sustainable elements are incorporated into the design such as natural cooling and ventilation of the covered courtyards, which have been inspired by traditional Middle Eastern wind towers.

- ✓ Delivered as a joint venture between BESIX and Trojan General Contracting LLC
- ✓ The joint venture will deliver all construction work apart from the foundations, which are already complete
- ✓ Demonstrates the technical capability of our in-house engineering team to optimise planning, methods and procurement
- ✓ Designed by award-winning architect Frank Gehry
- ✓ Asymmetrical cones featured in the design will surround the main building and serve as both museum entrances and outdoor exhibition spaces



CLIENT

Department of Culture and Tourism



EXPERTISE

Construct Only



TIMELINE

2021 – 2025



A cultural tribute

ABU DHABI, UNITED ARAB EMIRATES

Zayed National Museum

The Zayed National Museum will showcase the life of Sheikh Zayed bin Sultan Al Nahyan and the history of the United Arab Emirates through interactive exhibits, multimedia presentations, and historical artifacts. The museum merges contemporary design with traditional Emirati architecture, featuring narrow glass atriums inspired by falcon wingtips and galleries reflecting Sheikh Zayed’s values in education, conservation, sustainability, and culture. BESIX’s experience in the region, and reputation for delivering highly complex projects made us a reliable partner of choice.

- ✓ The Museum: Featuring five wings and four pods that house the galleries
- ✓ The Mound: A 30-metre high, man-made hill inspired by the Emirates’ terrain. It includes the main atrium and over 2 km of walkways, allowing visitors to explore the bases of the museum’s iconic falcon-wing-shaped towers and enjoy views of the cultural area on Saadiyat Island
- ✓ The Timeline Garden: Spanning 40,250 m², this landscaped area includes fountains and kiosks, providing a serene environment for visitors

	CLIENT Department of Culture and Tourism (Abu Dhabi)
	VALUE \$1B
	EXPERTISE Construct Only
	TIMELINE 2021 – 2025

Inspiring design

ABU DHABI, UNITED ARAB EMIRATES

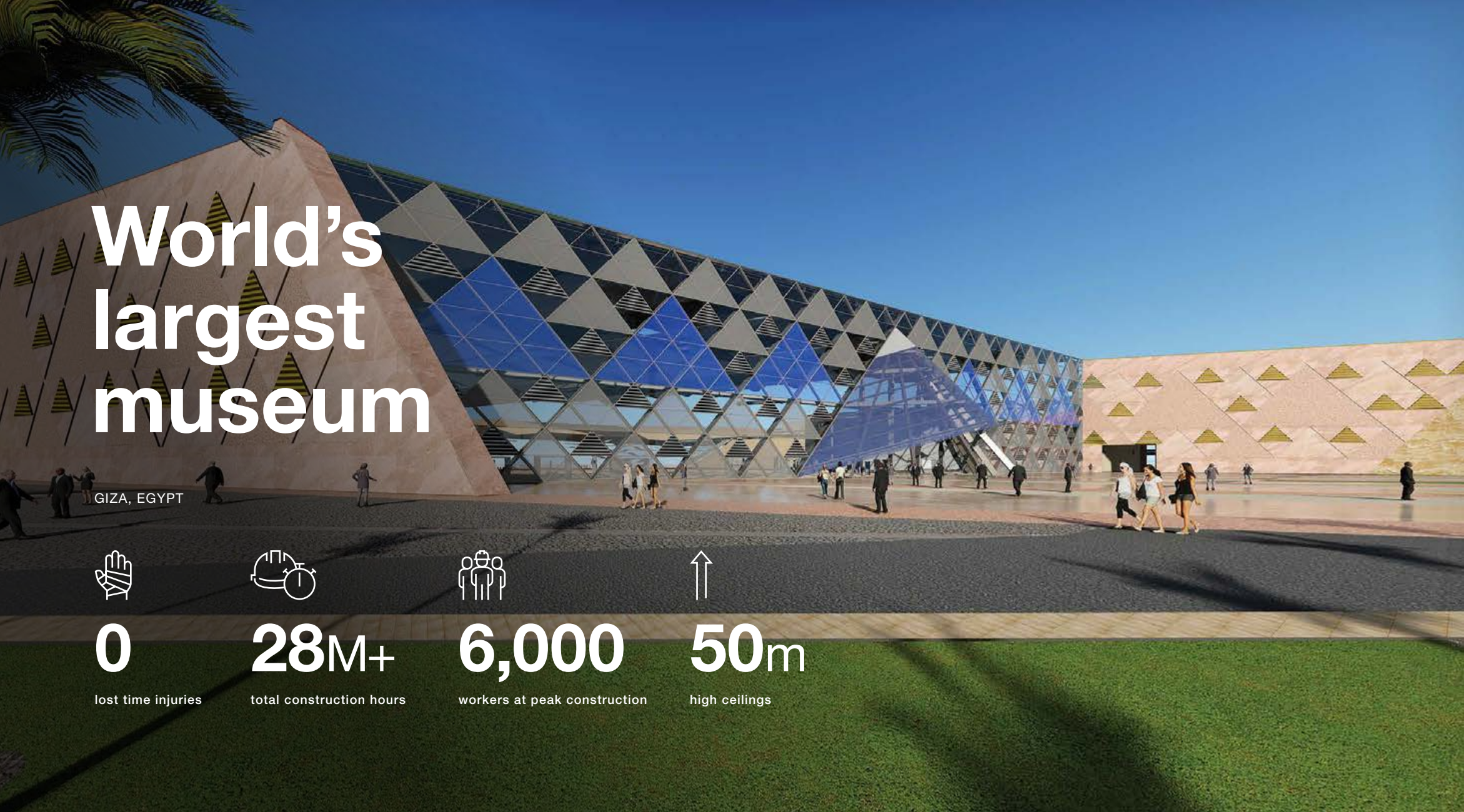
Ferrari World

An amusement park dedicated to the iconic Italian car manufacturer, the visually distinctive form of the building’s structure is directly inspired by the classic double curve side profile of the Ferrari GT body. Located within the 2,500 hectare man-made tourism hub of Yas Island, it was vital works did not interfere with other tourist attractions.

- ✓ Extensive collaboration and stakeholder engagement ensured minimal disruption to nearby venues as well as maintained both foot and vehicle traffic
- ✓ Sustainability features include a highly insulated roof as well as energy-efficient glass used in the main façade to reduce thermal loads and glare
- ✓ 150,000 square metre theme park
- ✓ 190,000 square metre gross floor area

	CLIENT Aldar Properties
	VALUE \$690M
	EXPERTISE Design + Construct
	TIMELINE 2011 – 2013





World's largest museum

GIZA, EGYPT



0

lost time injuries



28M+

total construction hours



6,000

workers at peak construction



50m

high ceilings



Grand Egyptian Museum

The Grand Egyptian Museum (GEM) is an archaeological destination like no other, housing more than 100,000 priceless Ancient Egyptian antiquities such as the full King Tutankhamun collection and the 80-tonne, 13-metre-tall Statue of Ramses II.

The architecturally complex folded cover slab roof features 50,000 individual cascading triangular panels, and each square metre is unique. Our global team of 70 engineers dealt with this complex challenge by utilising numerous BIM's to calculate and illustrate the most precise structural relationships, ensuring the perfect alignment of the underside of the roof and its suspended ceilings.



CLIENT

**Egypt Ministry of
State for Antiquities**



VALUE

\$1.1 B



EXPERTISE

Construct Only



TIMELINE

2012 – 2019



***From a construction point of view,
it is a building that has a purpose.
This is a building that hosts a
legacy and hosts a heritage of
a great civilisation...I think it
will open up a completely new
concept of how to visit Cairo.”***

Osama Bishai
Chief Executive Officer, Orascom Construction

- ✓ Part of a 50 hectare masterplan for the Giza pyramid plateau
- ✓ Forming over 14,000 cubic metres of concrete into shape required complex formwork supported by reinforced beams and slab structures
- ✓ Months of concrete testing ensured the best compromise between functionality and surface quality
- ✓ The insulated concrete design can withstand extreme desert heat of up to 70 degrees Celsius, keeping the interior and precious artefacts a stable 23 degrees

Experience you can count on





Discover more at besixwatpac.com

Tel 07 3251 6300

Email receptionbne@besixwatpac.com

Connect



[@besixwatpac](#)



[besix_watpac](#)

