

Hospitals

Building sustainable healthcare infrastructure

Embrace complexity

Value beyond expectation

Local legacies

Powerful partnerships

People & passion

Building the best together

VALUE-DRIVEN, CERTAINTY ASSURED, LOCALLY FOCUSED



1,200+

number of projects delivered since 1983



650+

passionate employees



2,400+

strong subcontractor network (since 2019)



160+

in-house engineering experts globally



250+

awards won since 2000



34

5+ Green Star projects delivered

With over a century of heritage in Australia, BESIX Watpac brings deep local knowledge, proven experience, and trusted industry relationships to every project. Originating in Queensland, we've earned our reputation as a respected builder across Australia and New Zealand through every project we undertake and the passionate people who build them.

We combine exceptional talent with leading digital construction methods, in-house engineering, and the strength of global capability. Our diverse portfolio spans all sectors, with a focus on projects where we can create the greatest value.

Our ethos is 'building the best together', and collaboration is at the heart of everything we do. We work closely with our partners, local delivery teams, and communities to achieve the best outcomes—together.

Herston Surgical, Treatment and Rehabilitation Services (STARS)
2021 National Health Facility Award, Master Builders Australia
2021 Health Facilities over \$20M, Master Builders Queensland Award (Brisbane)

Better health infrastructure

Partner with an experienced local builder



90

circa health projects since 1990



\$5B

circa value health projects



24+

construction industry awards in health



6

current health projects

Keep pace with contemporary community needs, changing population demographics and advances in technology and research. Build user-focused facilities to enhance patient healthcare and wellbeing.

We bring a personalised approach to delivery, with collaboration at the heart of everything we do.

For decades, we have built hospital and healthcare facilities that have contributed to exceptional community and health outcomes.

Our specialist teams excel in delivering complex health infrastructure projects. From the largest rehabilitation service in the Southern Hemisphere and New South Wales' first robotic pharmacy, to a co-located university education space, we understand what is critical for success. Choose the contracting model that best suits your needs, whether it's a two-stage contracting model or an award-winning public-private partnership. We ensure a stimulated local economy, expanded healthcare capacity, and a social responsibility partnership that optimally engages local subcontractors.

We design and build innovative public and private hospitals, including:

- ✔ Brownfield and greenfield hospital and mental health infrastructure
- ✔ Research and teaching hospitals
- ✔ Ambulatory care
- ✔ Laboratories up to PC4
- ✔ Forensic facilities
- ✔ Specialist theatres
- ✔ Emergency departments
- ✔ Rehabilitation Inpatient Units
- ✔ Cardiorespiratory Inpatient Units
- ✔ Intensive Care and High Dependency Units
- ✔ Coronary Care and Cardiac Investigations Units
- ✔ Radiology and Medical Imaging
- ✔ Cancer care
- ✔ Maternity and neonatal care
- ✔ Pathology
- ✔ Central sterile services
- ✔ Catheterisation labs
- ✔ Robotic pharmacies
- ✔ Allied health facilities
- ✔ Helipads
- ✔ Vibrant and innovative workspaces

• Ipswich Hospital
Ipswich, QLD

Hospital delivery

Our specialist approach to achieve low-risk program and cost certainty.



• Mater Private Hospital Springfield
Springfield, QLD



• Gold Coast Private Hospital
Southport, QLD

✓ Design optimisation

Our ability to support clients through the design phase allows us to share project goals and priorities, provide input on resource allocation and collaborate on design solutions to identify opportunities and unlock value. This enables upfront transparency into building costs and schedules, assisting with project budget allocation and timing.

✓ Reliable commissioning and handover

Our project planning and design process starts with your end goal. We consult widely with stakeholders and have commissioning specialists on board who undertake rigorous testing and commissioning, especially during a staged handover, to de-risk the final stages of project delivery and ensure certainty of delivery.

✓ Live environment experts

We ensure a safe and seamless construction experience to maintain continuity of operations. Through good communication and stakeholder engagement, we build a thorough understanding of hospital operations to develop a program that ensures no disruptions to critical functions. From decanting and hazard management to separation zones that minimise cross-contamination risk, we guarantee mission-critical activities are safeguarded with zero unplanned disruptions.

✓ Collaborative engagement

Our specialist teams are selected for their expertise in complex operational environments. We work closely with client teams, facility managers, local supply chains, and the wider community to maximise innovation, future-proofing, maintain safety and security, and mitigate risks. Total transparency ensures that project expectations are clear.

✓ Technical and services expertise

World-class health facilities rely on industry-leading technology. By working closely with clients, we customise the scope of works and procure specialist equipment such as audiovisual and simulation systems. Additionally, our services experts ensure services are designed, installed, commissioned, and handed over without any unplanned disruption while optimising whole-of-life costs.

✓ Sustainable and Future-Proofed Solutions

We incorporate flexibility and redundancy to accommodate future expansions to your healthcare assets. We also consider wider issues that can impact your facility, such as sustainability expectations, changing demographics, and societal priorities like aged care, mental healthcare needs, or wellness trends.

Expanding local healthcare capabilities

IPSWICH, QUEENSLAND



200

beds

6

additional operating theatres



Artist's impression



Artist's impression



Artist's impression

Ipswich Hospital Expansion

The Ipswich Hospital Expansion project is a vital investment in healthcare infrastructure, addressing the region's growing population and healthcare needs as part of Queensland's Hospital Rescue Plan.

The expansion will deliver a 12-storey Acute Service Building that will provide state-of-the-art facilities for patients and medical staff to ensure the community has access to high-quality services and a more sustainable healthcare model for the future. This major expansion will not only improve health outcomes in the region but also create job opportunities and support the local economy.



CLIENT
Queensland Health



EXPERTISE
**2 Stage
Managing Contractor
Design + Construct**



TIMELINE
2023 – 2027



With Ipswich Hospital busier than ever before, it is vital we can continue to meet the growing healthcare demands of the community. The hospital expansion will allow us to do this not just in the short-term, but in the decades to come."

Michael Willis
West Moreton Health Board Chair

- ✓ The new Acute Services Building will accommodate a new Emergency Department, satellite medical imaging services, six operating theatres, new Central Sterilising Department, pharmacy, mortuary and back of house services
- ✓ Live environment delivery within a busy hospital campus
- ✓ 200 beds (including Cardiac Care and Intensive Care)
- ✓ Shell space for future fit out of a hybrid theatre and campus security room as well as expansions for the Emergency Department and Medical Imaging



Shellharbour Hospital

The new Shellharbour Hospital marks a significant advancement in providing world-class healthcare to the Illawarra region, reducing the need for residents to travel for treatment. The new hospital will provide the local community with an expanded emergency department along with specialised elective surgery, rehabilitation and aged care, acute medical, and mental health services.

Featuring cutting-edge technologies and sustainable design principles, the new hospital will address the region's growing healthcare needs while enhancing operational efficiency and delivering high-quality care. The project will also provide opportunities for local businesses to be involved where possible.

	CLIENT Health Infrastructure NSW
	VALUE \$780M
	EXPERTISE Design + Construct
	TIMELINE 2024 – 2027



The works will also help drive education and job opportunities for the Illawarra region, supporting around 800 direct jobs during construction, with the potential to support thousands of indirect jobs over the life of the project.

Anna Watson MP
Member for Shellharbour

- ✓ Construction of a six-storey Acute Services Building, three-storey Ambulatory Care Building and two-storey Mental Health Building
- ✓ Car park and improved public transport links
- ✓ Approximately 800 construction jobs created, benefiting the local economy
- ✓ Provision for a future rooftop helipad to enable rapid air transport for critically ill patients to receive timely and specialised care



BRISBANE, QUEENSLAND



3,800

construction
jobs created



150+

apprentices



4%+

Indigenous participation

Herston Surgical, Treatment and Rehabilitation Services (STARS)

Herston Quarter is a visionary five-hectare health, hospital and aged care development forming a key component of Brisbane's Herston Health Precinct; a global benchmark in public and private medical facilities.

The centrepiece of this precinct is the 35,000 square metre, highly specialised Surgical, Treatment and Rehabilitation Services (STARS) building. It is the largest specialist rehabilitation service in the southern hemisphere and has revolutionised Metro North Hospital and Health Service's offering.



CLIENT

Australian Unity



VALUE

\$405M



EXPERTISE

Public Private Partnership



TIMELINE

2016 – 2020



PARTNERS

Queensland Government/
Metro North Hospital
and Health Service



The STARS will provide short-stay elective surgery and endoscopy as well as various outpatient services hree endoscopy procedure rooms and consultation spaces for a range of specialties. This facility will become a world-class facility supporting 900 clinical and non-clinical jobs.”

Hon Steven Miles
Queensland Minister for Health (Former)



Award Winner

- 2021 National Health Facility Award
Master Builders Australia
- 2021 Health Facilities over \$20M
Master Builders Queensland Award (Brisbane)

- ✓ Major stakeholders included nine hospital and research institutes such as the tertiary Royal Brisbane and Women's Hospital, and leading research facility QIMR Berghofer
- ✓ Our collaborative approach was crucial to delivering optimal outcomes for the project and its stakeholders, and focused strongly on business continuity, operational readiness, and a comprehensive communication and community engagement strategy
- ✓ Other works included construction of a sky bridge link and Spanish steps, along with infrastructure and road upgrades
- ✓ Extensive design workshops and detailed construction methodologies identified the safest and most efficient solution for constructing the sky bridge link

Delivering innovation and complex infrastructure

KOGARAH, NEW SOUTH WALES



11

storey building



3

levels of inpatient beds



2

new specialty units



Artist's impression



Artist's impression



Artist's impression

St George Hospital Stage 3 Redevelopment

This transformative redevelopment will enhance healthcare services for local communities by consolidating outpatient and community services into a state-of-the-art Integrated Ambulatory Care Precinct, ensuring improved accessibility and quality of care for all patients.

This project marks BESIX Watpac's eighth collaboration with Health Infrastructure (NSW). Our previous successes with the client enabled a streamlined communication, enhancing collaboration and engagement.



CLIENT
Health Infrastructure NSW



VALUE
\$411M



EXPERTISE
Design + Construct



TIMELINE
2023 - 2026



The new Ambulatory Care Building will provide comprehensive services for community and out-of-hospital care, bringing together a range of new, enhanced and existing health services into the one location, right next to the St George Hospital Campus."

Brad Hazzard
NSW Health Minister

- ✓ 23,000 m² gross floor area
- ✓ A new 11-storey Ambulatory Care Building with two basement levels, eight clinical levels and one plantroom
- ✓ Additional aged care and rehabilitation inpatient beds, incorporating an Acute Acquired Brain Injury Unit and an Aged Care Behavioural Management Unit
- ✓ The design process involved extensive collaboration with 31 user groups and over 100 design reviews
- ✓ Works include hospital decant and commencement of operations in the new building, a new public forecourt and green spaces
- ✓ Refurbishment works throughout several locations across in the hospital campus

Revolutionary hospital redevelopment

HORNSBY, NEW SOUTH WALES



2,700

construction jobs created



5%

Indigenous participation



27%

of construction hours delivered by apprentices

Hornsby Ku-ring-gai Hospital Stage 2 Redevelopment

The redevelopment of this major hospital is a revolution in Sydney's public health offering. With mission-critical operations on nearly all site boundaries, our meticulously planned business continuity program and live environment expertise were critical to the project's success.

BESIX Watpac developed a 'hospital first' approach to safeguard operations, patients, staff and other hospital personnel, and very sensitive and expensive machinery. We adopted construction methodologies such as hourly consultation, vibration monitoring regimes, and bracing to undertake demolition and construction works adjacent to operational buildings.



CLIENT

Health Infrastructure



VALUE

\$265M



EXPERTISE

Design + Construct



TIMELINE

2018 – 2022



Our team has worked carefully and meticulously within the live operating environment. We have found new ways to deliver and innovate like designing, procuring and installing the State's first public hospital robotic pharmacy."

Mark Cahalin
Project Manager, BESIX Watpac



- ✓ Refurbishment and expansion of a seven-storey clinical services building including intensive care and high dependency unit, respiratory and cardiac care units
- ✓ New and expanded clinical services including a robotic pharmacy, ambulatory care centre, medical imaging unit, and emergency department
- ✓ Fit-out of co-located paediatrics unit
- ✓ Co-located education space with the University of Sydney
- ✓ Five-stage delivery model focused on planning, procuring, decanting, demolishing and delivering each hospital department – developed in collaboration with our client and multiple user groups
- ✓ Procurement strategies for specialist equipment such as the robotic pharmacy were co-designed with user groups
- ✓ A change in scope to incorporate a new helipad on the clinical services building was accommodated through our flexible delivery model



Investing in improved healthcare

MELBOURNE, VICTORIA



128

new beds



3,500

jobs created



60%

increase in gross floor area of the hospital



Casey Hospital Expansion

Located in one of Melbourne’s fastest growing populations, the Casey Hospital Expansion was delivered as a public private partnership, making it one of the first successful hospital expansions completed under this delivery model in Australia. Delivered in a 24/7 operating environment, as well as the handover taking place during a global pandemic, required rigorous planning and close collaboration with the Victorian Government and hospital staff to mitigate impacts.

The expansion increased the hospital’s footprint by 60 per cent, enabling the hospital to treat an additional 25,800 patients, perform 8,000 more procedures and support an extra 1,300 births each year.



CLIENT
Victorian Government



VALUE
\$135M



EXPERTISE
Public Private Partnership



TIMELINE
2017 – 2020



PARTNERS
Plenary Group and Brookfield GIS



In-depth collaboration with Monash Health and key stakeholders were pivotal to ensuring hospital operations were maintained throughout construction.”

- ✓ Our detailed business and management plans safeguarded sensitive medical equipment as well as ensured continuity of operations throughout construction
- ✓ A 3D design platform for architectural and services documentation improved design coordination and minimised potential issues
- ✓ The 13,000 square metre expansion increased the floor area by 60 per cent
- ✓ The project delivered the hospital’s first ICU, 128 additional beds, an upgraded pharmacy, pathology and combined education and training spaces
- ✓ 3,500 jobs were created both directly and indirectly



SOUTHPORT, QUEENSLAND



40

specialised
beds



2

storey
building



115

apprentices employed
through project



Gold Coast University Hospital Secure Mental Health Rehabilitation Unit

The first facility of its kind on the Gold Coast, the new Secure Mental Health Rehabilitation Unit is a state-of-the-art facility designed to provide specialised mental health care and rehabilitation in a secure environment. The unit seamlessly integrates with the existing hospital infrastructure, significantly enhancing the delivery of secure mental health services and promoting a holistic approach to consumer care and well-being.

Delivered within the existing hospital campus, our team's specialist approach involved close collaboration with the client and design team to enhance efficiency and reduce costs by minimising unnecessary materials and optimising design features.



CLIENT
Gold Coast Health



VALUE
\$100M



EXPERTISE
Construct Only



TIMELINE
2022 – 2025



Our vision is to create a safe, therapeutic space where patients can recover with dignity and compassion... We have designed the SMHRU to be a healing environment that integrates natural light, secure outdoor areas, and a home-like atmosphere. This approach is essential for patients who may need extended stays, allowing them to feel supported as they work towards recovery."

Dr Sandeep Chand
Clinical Director of Mental Health
and Specialist Services at Gold Coast Health

- ✓ 115 apprentices employed throughout construction
- ✓ Features consulting and therapy rooms, interview spaces, and courtyards
- ✓ Delivering a facility that provides 24-hour clinical support, to improve patient outcomes
- ✓ Linkway that connects to the existing Acute Mental Health Building
- ✓ The unit will offer extended inpatient care for individuals with complex mental health needs, focusing on recovery, autonomy, and self-determination



ADELAIDE, SOUTH AUSTRALIA



Eastwood Private Hospital

Perfectly located in the Adelaide CBD fringe, Eastwood Private Hospital will set the standard for private health care in Adelaide. The new purpose-built, six-storey private hospital includes a six-theatre perioperative floor with on-site sterilisation, 51-bed ward, as well as integrated radiology, pathology and allied health services. The hospital is set to become a leading orthopaedic complex in Adelaide.



CLIENT
**Eastwood Private Hospital
Development Pty Ltd**



VALUE
\$84M



EXPERTISE
Design + Construct



TIMELINE
2023 – 2025



The project includes state-of-the-art operating theatre facilities that will help reduce surgery wait times and provide patients with a wider range of healthcare options. Barwon’s investment into Eastwood Private Hospital will deliver a truly valued-based integrated healthcare model.”

Tom Patrick
Head of Healthcare Property,
Barwon Investment Partners

- ✔ Significant cost and program savings achieved through an Early Contractor Involvement (ECI) process
- ✔ Scope of works include fit-out across all lobby and corridor areas, as well as ground and levels 3 and 4, which houses the perioperative floor and ward rooms
- ✔ Works also included a carpark, all associated plant, equipment, support services, courtyards, and external landscaping
- ✔ The completed development will include a multi-level car park, café and retail area

Enhanced regional healthcare

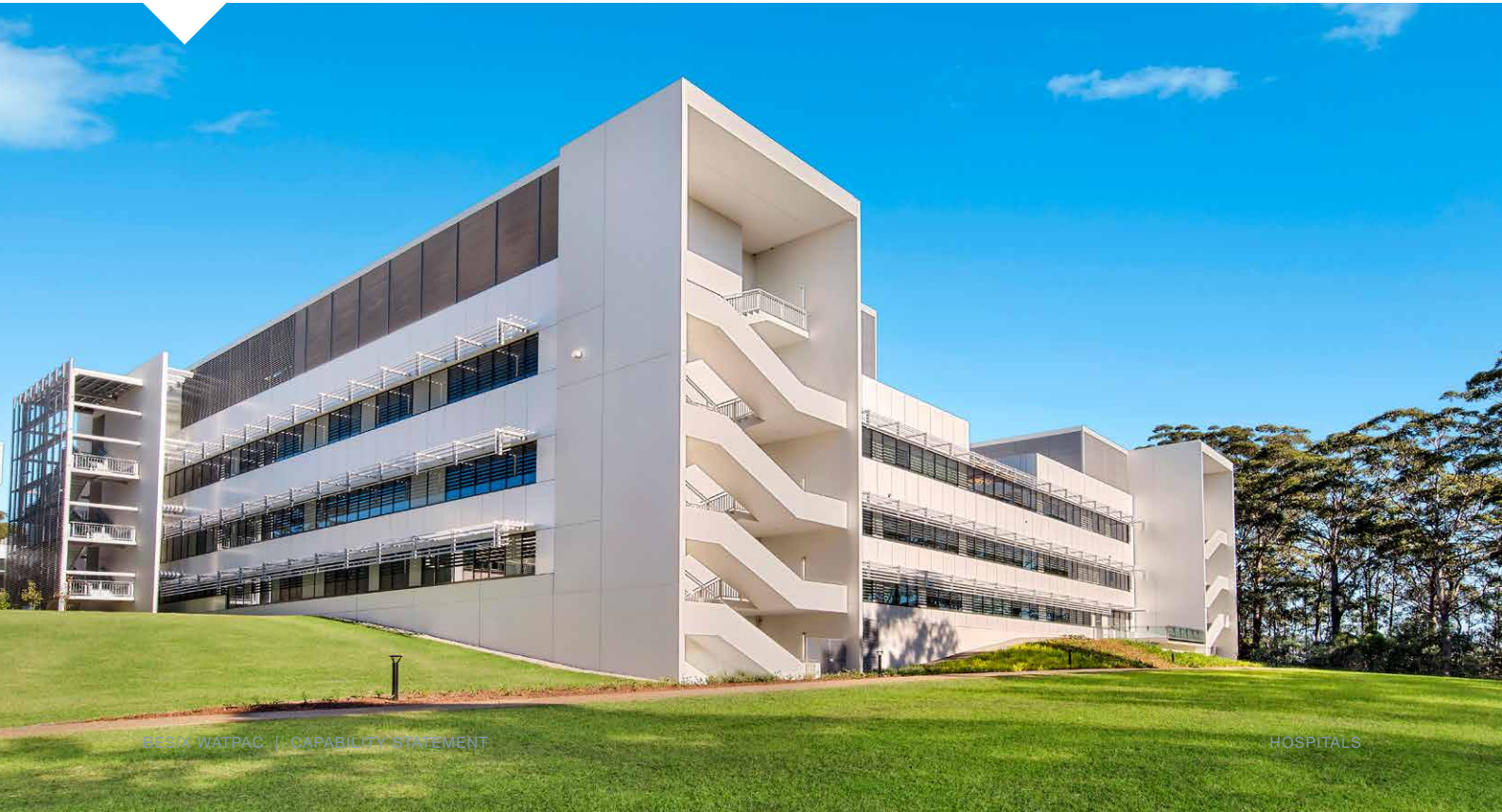
PORT MACQUARIE, NEW SOUTH WALES

Port Macquarie Base Hospital Expansion

The Port Macquarie Base Hospital Expansion was delivered as part of federal and state government plans to improve the healthcare services for regional New South Wales. Close collaboration with hospital management ensured minimal disruption to hospital operations throughout construction.

- ✓ Provided an additional 70 overnight acute inpatient beds, larger emergency department, additional operating theatres, new critical care unit and cardiac catheterisation laboratory
- ✓ Improved access to clinical and aged care services for the Mid North Coast NSW community
- ✓ 12,000 square metre expansion over four storeys
- ✓ Delivered on time and within budget
- ✓ In 2023, the team delivered a new state-of-the-art rooftop helipad above the hospital's Emergency Department, extending our strong relationship with Health Infrastructure in the region

	CLIENT Health Infrastructure NSW
	VALUE \$69M
	EXPERTISE Design + Construct
	TIMELINE 2012 – 2014



Doubling emergency department capacity

WERRIBEE, VICTORIA


Artist's impression

Werribee Mercy Hospital Emergency Department Expansion

The Victorian Government is investing \$280 million to boost emergency department capacity at the Werribee Mercy Hospital and Casey Hospital Berwick. BESIX Watpac has been appointed to construct the Werribee Mercy Hospital emergency department expansion.

The project will benefit from our team's extensive experience in delivering health projects in a live environment, on tight schedules, within budget and to the highest standard.

- ✓ Four new resuscitation bays
- ✓ Seven consult/interview rooms
- ✓ Eight fast track bays
- ✓ Mental health treatment spaces
- ✓ 16 short stay beds
- ✓ 36 emergency care cubicles
- ✓ Behavioural Assessment Room
- ✓ Separate but co-located paediatric and acute and short stay zones

	CLIENT Victorian Government
	EXPERTISE Construct Only
	TIMELINE 2026



World-class healthcare in remote regional locations

ROMA, QUEENSLAND



\$4M

spent in the local economy



370,718

hours worked



0

lost time injuries

Roma Hospital Redevelopment

An entirely new hospital was built for the Maranoa region. Logistical planning was critical to the project's success due to limited materials and equipment being available locally due to the project's location. Long-term planning ensured materials, labour force and accommodation were booked well in advance.

Our team engaged with local businesses, subcontractors and suppliers creating opportunities for participation and ensuring the project created a positive legacy for the region.



CLIENT
Queensland Health



VALUE
\$86M



EXPERTISE
Construct Only



TIMELINE
2018 – 2021



The builder and subcontractor have done an exceptional job to complete a project of such a high standard in a remote location. Not only do all the finishes stand out, but the plant room is neat as well – one of the most organised plant rooms I have seen.”

Master Builders judge



Multi-award Winner

- 2021 **Project of the Year**
Master Builders Queensland (Downs & Western)
- 2021 **Health Facilities over \$20M**
Master Builders Queensland (Downs & Western)

- ✓ The project immersed into the local community through job creation, local event sponsorships and running a crane naming competition with local schools.
- ✓ An entirely new hospital with a gross floor area of 12,550 square metres to replace the previous adjacent building
- ✓ Facilities include emergency, allied health, and medical imaging departments as well as a central sterilising unit, rehabilitation gym and 24 inpatient beds
- ✓ Exceptional planning to overcome the challenge of obtaining materials given the project's remote location
- ✓ Delivered ahead of schedule

High quality mental health care

IPSWICH, QUEENSLAND

Ipswich Hospital Mental Health Unit

The BESIX Watpac team delivered a three-storey 64-bed high dependency and aged population’s mental health unit adjacent to the Ipswich Hospital campus. The facility provides a contemporary environment for best practice mental health care, recovery and rehabilitation services. This was a single stage project with specialist fixtures and design requirements to satisfy anti-ligature components of the brief.

- ✔ An enclosed overhead bridge links the new facility with Ipswich Hospital to enable the safe movement of patients, staff and equipment
- ✔ The bridge was delivered ahead of schedule through meticulous planning and extensive communication with all stakeholders
- ✔ Exceptional stakeholder engagement to minimise impact on adjacent residential properties and the neighbouring community
- ✔ Minimal disruption to the residential community surrounding site



CLIENT
Queensland Government



VALUE
\$82M



EXPERTISE
Construct Only



TIMELINE
2021 – 2023



Photo Credit: Hassell-Studios



Major regional hospital upgrade

BALLARAT, VICTORIA

St John of God Ballarat Stage 1 Redevelopment

BESIX Watpac and local Ballarat builder H.Troon teamed up to build the St John of God Hospital redevelopment in Ballarat – one of the largest private hospitals in regional Victoria. This important redevelopment enables St John of God Health Care to continue its history of more than 100 years of service to the community and injected more than 100 new local jobs during construction.

- ✔ Works included construction of a five-level tower including a new main entry and links to the existing hospital, 10-bed Intensive Care Unit/Critical Care Unit (ICU/CCU), four new operating theatres, 30-bed in-patient ward, and shell spaces for future wards, theatres and consulting suites.
- ✔ Modifications to the existing Medical Services Building involved relocating the Central Sterile Services Department, upgrading pathology, expanding the Cardiovascular Intervention Laboratory, and one Cath Lab Shell.
- ✔ The building has been structurally designed with future expansion in mind so that additional levels can be seamlessly integrated at a later date.



CLIENT
St John of God Healthcare



VALUE
\$66M



EXPERTISE
Construction only







TIMELINE
2022 – 2024

Live environment expertise

MELBOURNE, VICTORIA

Frankston Private Hospital Expansion

Exceptional planning and communication with the client and hospital staff ensured minimal disruption as we delivered a major refurbishment and expansion of this high-quality cancer treatment facility.

	CLIENT Divine Logistics
	VALUE \$40M
	EXPERTISE Design + Construct
	TIMELINE 2016 – 2017



Multi-project redevelopment

Cairns Hospital Upgrades

BESIX Watpac is delivering three projects at the Cairns University Hospital including a redevelopment of the Emergency Department, a High Voltage Upgrade to the power infrastructure and replacement of the chillers in Block B.

- Highly detailed planning and staging of works to ensure minimal disruption to the hospital's operations
- Emergency department upgrades will add six new beds, create 164 square metres of new facility and reconfigure 1,152 square metres of the existing facility
- Complex staging required to upgrade the oldest electrical infrastructure
- Replacing four old air conditioning chiller units and upgrading to three new state-of-the-art chillers
- Donating \$11,300 to the Far North Queensland Hospital Foundation through the auctioning of old generators removed through the project

	CLIENT The Cairns Hospital and Hinterland Health Service
	VALUE \$32M
	EXPERTISE Construct Only
	TIMELINE 2020 – Ongoing

BESIX Group



\$14.6B

work in hand



10,000+

employees



26+

countries



5

continents

BESIX Group, an award-winning international contractor, has been delivering some of the world's most iconic structures across five continents throughout their 110+ years of operation, ranging from the world's tallest building to the most complex infrastructure. Through BESIX Watpac, Australia and New Zealand proudly serve as one of the Group's three home markets.

This connection gives BESIX Watpac access to leading global knowledge that complements our deep local delivery expertise. We have a fully integrated local in-house Engineering Solutions team who is part of the BESIX Engineering Department – this means we can bring the most advanced technical engineering, constructability,

and methodology insights to each project. Our partners can be confident that by engaging BESIX Watpac, their projects will be in the best hands, benefitting from our accelerated ability to delivery any project, especially where complexity is involved.



↳ **Burj Khalifa**
Dubai, UAE



↳ **Saint-Denis Pleyel Station**
Paris, France



↳ **Grand Egyptian Museum**
Giza, Egypt



↳ **Dubai Water Canal Bridges**
Dubai, UAE

HOSPITALS



ABU DHABI, UNITED ARAB EMIRATES

Cleveland Clinic

Cutting-edge infrastructure

CLIENT **Mudadala**
EXPERTISE **Design + Construct**
TIMELINE **2010 – 2014**

The Cleveland Clinic is a top medical precinct with advanced infrastructure, technology, and sustainable design. Using coordinated workflows and BIM technology, over 60 drawings were produced daily. Processes were prepared for 20,000 pieces of equipment. The Clinic recycles 75% of its waste and involved 16,000 workers from 80+ nationalities.

MELUN, FRANCE

Groupe Hospitalier Sud Île-de-France (GHSIF)

Outstanding quality

CLIENT **Centre Hospitalier Marc Jacquet**
EXPERTISE **Design + Construct**
TIMELINE **2014 – 2018**

Completed on time and within budget, this ultramodern public hospital was built in 36 months, offering services like a polyclinic, psychiatric facilities, neonatal care, and an emergency department. Success was driven by collaboration with personnel, architects, and planners. The 56,000 square metre, 507-bed facility used LEAN planning.



BESIX WATPAC | CAPABILITY STATEMENT

BESIX WATPAC | CAPABILITY STATEMENT

HOSPITALS

A strong history of transforming local communities and national capabilities

Featured Projects

2020s

- **Ipswich Hospital Expansion**, Ipswich, QLD, 2028
- **Shellharbour Hospital**, Shellharbour, NSW, 2027
- **St George Hospital Stage 3 Redevelopment**, Sydney, NSW, 2026
- **Werribee Mercy Hospital ED Expansion**, Werribee, VIC, 2026
- **Eastwood Private Hospital**, Adelaide, SA, 2025
- **Gold Coast University Hospital Secure Mental Health Rehabilitation Unit**, Gold Coast, QLD, 2025
- **Cairns Hospital Upgrades**, Cairns, QLD, 2025
- **CSL Seqirus Biopharmaceutical Facility**, Tullamarine, VIC, 2024
- **St John of God Ballarat Stage 1 Redevelopment**, Ballarat, VIC, 2024
- **Ipswich Hospital Mental Health Unit**, Ipswich, QLD, 2023
- **Hornsby Ku-ring-gai Hospital Stage 2 Redevelopment**, Hornsby, NSW, 2022
- **Roma Hospital Redevelopment**, Roma, QLD, 2021
- **Herston Quarter**, Brisbane, QLD, 2020
- **Casey Hospital Expansion**, Casey, VIC, 2020
- **Jewish Care Senior Living Community**, St. Kilda, VIC, 2020

2010s

- **Australian Unity Retirement Community**, Sydney, NSW, 2019
- **Forensics Medicine & Coroners Court**, Lidcombe, NSW, 2018
- **Australian Nuclear Science and Technology Organisation (ANSTO) Nuclear Medicine**, Sydney, NSW, 2017
- **Frankston Private Hospital Expansion**, Frankston, VIC, 2017
- **Medium Secure Mental Health Rehabilitation Unit**, Brisbane, QLD, 2016
- **Australian Institute of Tropical Health and Medicine + Translational Research Facility**, Townsville, QLD, 2016

- **Baptcare Strathalan Residential Aged Care Facility**, Macleod, VIC, 2016
- **Knox Private Hospital Expansion**, Knox, VIC, 2016
- **Gold Coast Private Hospital**, Gold Coast, QLD, 2015
- **Mater Private Hospital Springfield**, Springfield, QLD, 2015
- **Kempsey District Hospital**, Kempsey, NSW, 2015
- **Sub-Acute Facility Townsville Hospital**, Townsville, QLD, 2014
- **Ayr Hospital Rural Remote Infrastructure Rectification Works**, Ayr, QLD, 2014
- **PC3 Laboratory Annexe**, Gold Coast, QLD, 2014
- **Port Macquarie Base Hospital**, Port Macquarie, NSW, 2014
- **Translational Research Institute**, Woolloongabba, QLD, 2013
- **Australian Hearing Hub**, Sydney, NSW, 2012
- **QIMR Smart State Medical Research Centre**, Herston, QLD, 2012
- **QH SEQ Distribution Centre**, Brisbane, QLD, 2011
- **Nambour Hospital New Ward Block & Refurbishment**, Nambour, QLD, 2011

- **Boggo Road Ecosciences Precinct**, Woolloongabba, QLD, 2010

- **Australian Tropical Science and Innovation Precinct**, Townsville, QLD, 2010

- **QHFSS Complex W8 Project**, Brisbane, QLD, 2010
- **Mt Olivet Hospital Stage 1**, Kangaroo Point, QLD, 2010
- **Cochlear Global Headquarters**, North Ryde, NSW, 2010

2000s

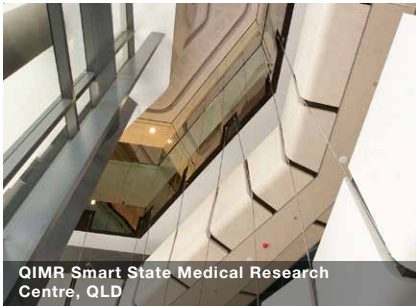
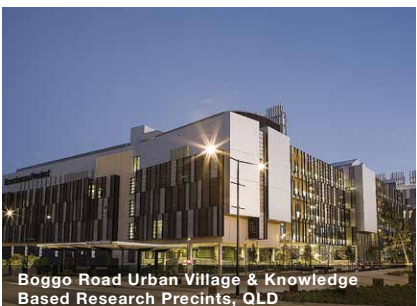
- **Holy Spirit Hospital Northside**, Chermside, QLD, 2009
- **QEI Jubilee Hospital Elective Surgery Expansion**, Brisbane, QLD, 2009
- **Australian Synchrotron Beamline Expansion**, Sydney, NSW, 2008

- **Mt Olivet Hospital Early Works Phase 1-3**, Kangaroo Point, QLD, 2008
- **Qld Smart Water Research Facility**, Southport, QLD, 2008
- **Melton and Craigieburn, Super Clinics**, Melton & Craigieburn, VIC, 2007
- **Queensland Brain Institute**, Herston, QLD, 2007
- **151 Robertson Street Dental**, Brisbane, QLD, 2006
- **Mater Cardiovascular Interventional Centre**, Woolloongabba, QLD, 2006
- **Mater Medical Records**, Woolloongabba, QLD, 2006
- **Laser Vision Eye Surgery**, Brisbane, QLD, 2006
- **Wesley Hospital OR Expansion and Refurbishment**, Brisbane, QLD, 2005
- **Townsville General Hospital, Basement**, Townsville, QLD, 2004
- **Mater Hospital Sub Acute Rehab. Step-Down Facility**, Woolloongabba, QLD, 2004
- **Mater Hospital Various Projects**, Woolloongabba, QLD, 2003
- **St Vincents Hospital ICU Unit**, Sydney, NSW, 2002
- **St Andrew's War Memorial Hospital**, St Andrew's, NSW, 2002

1990s

- **Central Energy Facility, PA Hospital**, Woolloongabba, QLD, 1999
- **Mater Hospital Ward C**, Woolloongabba, QLD, 1998
- **Holy Spirit Hospital**, Chermside, QLD, 1995
- **St Andrew's Place Medical Centre**, St Andrew's, NSW, 1993
- **Caboolture Hospital**, Caboolture, QLD, 1993

● Hospital ● Life Science





Discover more at besixwatpac.com

Tel 07 3251 6300

Email receptionbne@besixwatpac.com

Connect



[@besixwatpac](https://www.linkedin.com/company/besixwatpac)



[besix_watpac](https://www.instagram.com/besix_watpac)



← Main Entry

No Smoking
No Photography permitted here
except throughout the area



Mental Health
Acute Inpatient
Service

West Moreland Health



West Moreland Health

West Moreland Health

West Moreland Health

West Moreland Health

West Moreland Health

West Moreland Health

West Moreland Health

West Moreland Health

West Moreland Health

West Moreland Health

West Moreland Health

West Moreland Health

West Moreland Health

West Moreland Health

West Moreland Health

West Moreland Health

West Moreland Health

West Moreland Health

West Moreland Health

West Moreland Health

West Moreland Health

West Moreland Health

West Moreland Health

West Moreland Health

West Moreland Health

West Moreland Health

West Moreland Health

West Moreland Health

West Moreland Health